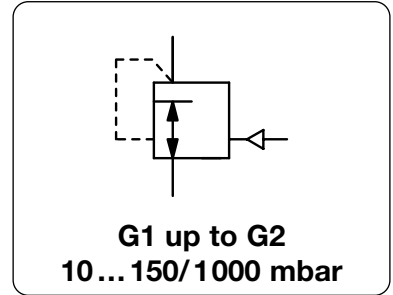


# LOW PRESSURE VOLUME BOOSTER UP TO 1 BAR, SUPPLY PRESSURE MAX. 20 BAR RZ-J

<b>Description</b>	Highly sensitive diaphragm low pressure volume booster with excellent regulating characteristics.		
<b>Media</b>	compressed air or non-corrosive gases		
<b>Supply pressure</b>	max. 20 bar depending on the accuracy: the smaller P <sub>1</sub> the higher the accuracy max. 10 bar at pressure range < 150 mbar		
<b>Pilot pressure</b>	max. 1000 mbar		
<b>Air consumption</b>	without constant bleed		
<b>Relieving function</b>	non-relieving, optionally relieving		
<b>Accuracy</b>	at max. flow rate < e.g. 10% pressure deviation of full scale		
<b>Adjustment</b>	manual by turning the spindle under the cover of the spring cage		
<b>Gauge port</b>	not available		
<b>Mounting position</b>	any		
<b>Temperature range</b>	-20 °C bis 60 °C / -4 °F to 140 °F		
<b>Material</b>	Body: SG cast iron GGG50, GGG40 at G2	Elastomer: NBR/Buna-N, optionally FKM	Inner valve: brass and stainless steel
	Spring cage: aluminium		



Dimensions			Accuracy %	Nominal size DN	Flow rate l/min*1	P <sub>1</sub> max. bar*2	Connection thread G	Pressure range mbar	Order number	D*
A	B	C								

Low pressure volume booster						supply max. 20 bar, non-relieving, 1:1 transmission ratio	RZ-J		
100	245	30	10	17	1800	10	G1	15 ... 110	<b>RZ1-08J</b>
			5		3300			180 ... 1000	<b>RZ3-08J</b>
100	245	30	10	17	2700	10	G1½*3	15 ... 110	<b>RZ1-12J</b>
			5		5000			180 ... 1000	<b>RZ3-12J</b>
254	460	80	10	34	15000	10	G2	10 ... 350	<b>RZ1-16JF</b>
			5		28000			350 ... 1000	<b>RZ2-16JF</b>



RZ1-08J

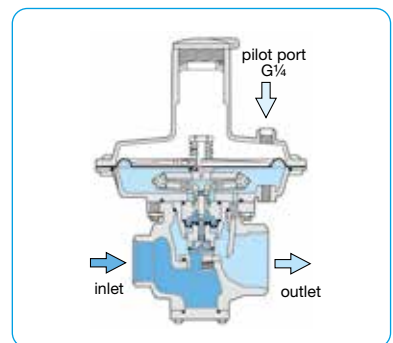
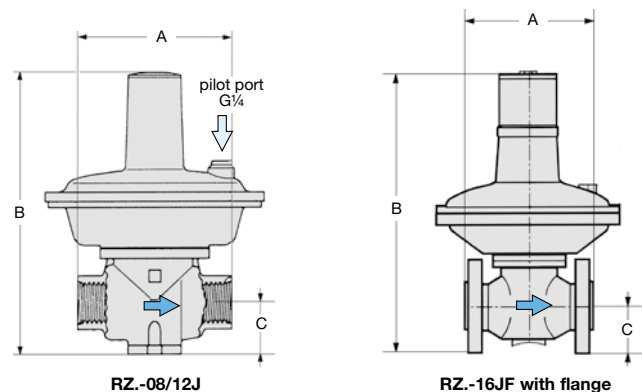
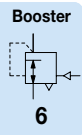
## Special options, add the appropriate letter

<b>relieving</b>	with relieving function	RZ . . . R
<b>FKM elastomer</b>		RZ . . . V
<b>flange connection</b>	see chapter for SST devices / flanges (not for RZ.-16J)	RZ . . . F.
<b>carbon dioxide</b>	CO <sub>2</sub>	RZ . . . 03
<b>argon</b>	Ar	RZ . . . 05
<b>nitrogen</b>	N <sub>2</sub>	RZ . . . 07
<b>helium</b>	He	RZ . . . 09
<b>hydrogen</b>	H <sub>2</sub>	RZ . . . 11
<b>methane</b>	CH <sub>4</sub>	RZ . . . 13
<b>oxygen</b>	O <sub>2</sub>	RZ . . . 15
<b>propane</b>	C <sub>3</sub> H <sub>8</sub>	RZ . . . 16
<b>nitrous oxide</b>	N <sub>2</sub> O	RZ . . . 17

up to 16 bar



RZ1-16JF



\*1 at 4 bar supply pressure and max. outlet pressure    \*2 see description above    \*3 G1 thread at inlet

\* Produkt group

PDF CAD  
www.aircom.net



Order example:  
**RZ1-08J**